

An aerial photograph of a small, crescent-shaped island in the middle of a vast, deep blue ocean. The island is covered in dense green tropical forest and has a thin strip of white sandy beach along its outer edge. The water around the island is a lighter, turquoise blue, indicating a shallow reef flat. In the distance, the horizon line separates the dark blue sea from a sky filled with soft, white clouds. The overall scene is serene and idyllic.

DISCOVER ZANZIBAR

# & Beyond Mnemba Island

This romantic, barefoot-island haven in the Zanzibar Archipelago is committed to a legacy of community upliftment and marine conservation.

DISCOVER ZANZIBAR  
&Beyond Mnemba Island

## Why stay?

### 1 INTIMATE, EXCLUSIVE AND FLEXIBLE ISLAND GETAWAY

&Beyond Mnemba Island is an idyllic tropical gem located off the north-eastern tip of Zanzibar. 12 luxuriously rustic palm-frond bandas peep out onto white coral sand beach from the dappled shade of the casuarina pine forest. Inhabited only by &Beyond guests and the staff taking care of them, the tiny island is just 1.5 km (less than a mile) and is the ultimate escape. The size of the island makes for an intimate and relaxing experience. Choose exactly how and where you would like to spend your day and our team will make it happen.

### 2 CONNECT & RE-AWAKEN YOUR SOUL

Barefoot serenity and romance is the allure of &Beyond Mnemba Island. Take the time to rejuvenate and heal in true African style. Just escaping to this haven is soul soothing, with the open style design, the natural world is integrated into the lodge. Creating a holistic connection, engage in a wide range of wellness and spiritually awakening activities that draw inspiration from the scenery of this unique island. Delight your taste buds in the simple and exuding essence of Zanzibar's richness, fragrance, history and soul through our organic and freshly-prepared food, inspired by barefoot beach simplicity like the island itself.

### 3 CONSERVATION ON YOUR DOORSTEP

&Beyond Mnemba Island is known for its coral atoll and the calm azure seas, boasting irresistible swimming directly from the beach. Venture just 10 minutes away on a motorboat to find snorkeling spots with kaleidoscopic marine life. As a significant breeding site for green turtles, Mnemba Island team patrol the beaches daily to monitor and record new turtle activity. The island has also become a new home for two unique antelope species, Ader's duiker and suni antelope, through our successful protection project.



All the complexities of life are stripped away, leaving only crystal turquoise waters, cool white beaches, a friendly jungle. It is the perfect place to wash up on with your special companion. ”

&BEYOND GUEST





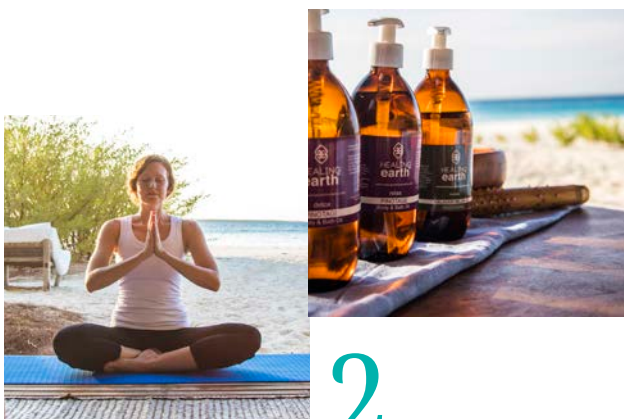
DISCOVER MNEMBA ISLAND

# Adventures of a lifetime

Island experiences set against a backdrop of azure seas, white sandy beaches and the kaleidoscopic culture and history of Zanzibar that is woven into this space.

DISCOVER ZANZIBAR  
Adventures of a lifetime

# Experiences and highlights



1

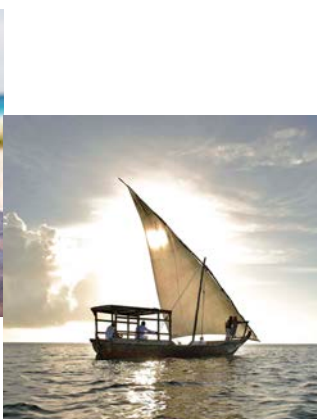
## YOGA

Channel your energy, balance your chakras and increase your self-awareness against the backdrop of a pristine ocean with a yoga class. Classes can be accommodated to fit all levels of experiences and preferred style and can be taken in private or as part of a group.

2

## WELLNESS TREATMENTS

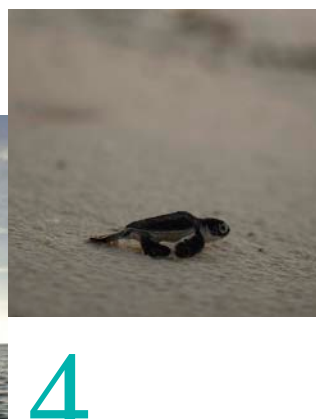
&Beyond Mnemba Island offers the perfect opportunity to simply unwind and reconnect with yourself and your loved ones. Pamper yourself with a soul-soothing wellness treatment in the comfort of your banda with Healing Earth products, made from all natural ingredients sourced in Africa.



3

## SUNSET DHOW CRUISE

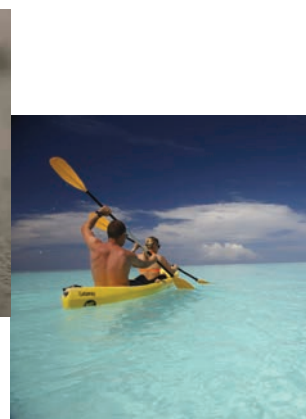
Relax in the romance of dusk surrounded by a vast expanse of sky above and ocean blues as your dhow glides towards the sunset. Be captivated by the evening colours, from pink hues to burning orange, with slashes of deep indigo and azure descending into inky black.



4

## GREEN TURTLE NESTING AND HATCHING

&Beyond Mnemba Island is an important green turtle breeding site and the conservation team work hard to protect and monitor turtle nests throughout the year. Track the footprints of female turtles at night and observe their nests during the year-round nesting season, peaking between April and August.



5

## WATER ACTIVITIES OFF THE BEACH

Grab a snorkel, mask and a set of fins and explore the kaleidoscopic coral reefs around &Beyond Mnemba Island. Take out a kayak or try your hand at stand-up-paddle boarding. Guests can set off on either a guided or a solo adventure in the tranquil waters surrounding the island.

## OTHER ACTIVITIES TO ENJOY

### SCUBA DIVING

Diving around Zanzibar features shallow coral gardens, walls adorned with spiral corals, tropical fish species, perfect underwater visibility and some of the best dive sites in the world.

### SCUBA DIVING COURSES

A great variety of dive sites and calm waters offers the ideal place to scuba dive. Refresher courses and a beginner three day Open Water course are offered.

### COMMUNITY VISIT

Gain insight into local communities on Zanzibar that play an integral part in reef conservation and depend on these sources of fish for their livelihood.

### DOLPHIN BOAT TRIP

Jump into a boat to search for pods of females and their calves that inhabit the warm, tropical waters. The playful bottlenose dolphin is the most frequently encountered dolphin here.

### STONE TOWN HISTORICAL TOUR

Delve into the beauty and ancient history of Zanzibar and explore architecture, a labyrinth of bustling narrow alleys and sand and coral-stone houses with intricately carved Arab and Indian doors.

### SPICE TOUR

Follow the scent of vanilla, clove, turmeric, nutmeg and cinnamon as you drive through the lush greenery of the island's spice growing areas.

*Activities may incur an additional charge and may need to be booked in advance*



DISCOVER ZANZIBAR  
Adventures of a lifetime

# Seasonal highlights

## ACTIVITIES

	JAN	FEB	MAR	APR	MAY	JUN	JUL	AUG	SEP	OCT	NOV	DEC
Yoga and wellness escape	✓	✓	✓	✓	✓	✓	✓	✓	✓	✓	✓	✓
Dining on the beach under the stars	✓	✓	✓	✓	✓	✓	✓	✓	✓	✓	✓	✓
Swimming and snorkeling straight from the beach	✓	✓	✓	✓	✓	✓	✓	✓	✓	✓	✓	✓
Scuba diving	✓	✓	✓	✗	✗	✓	✓	✓	✓	✓	✓	✓
Migrating humpback whales in Zanzibar	✗	✗	✗	✗	✗	✗	✓	✓	✓	✗	✗	✗
Experiencing turtle nesting	✓	✓	✓	✓	✓	✓	✓	✓	✗	✗	✗	✗
Turtle hatchlings	✗	✗	✗	✗	✓	✓	✓	✓	✓	✗	✗	✗
Quieter reefs and more exclusive diving	✗	✓	✓	✓	✓	✓	✗	✗	✗	✗	✗	✗
SEASONAL RATES*	\$\$\$	\$\$\$	\$\$\$	\$	\$	\$\$\$	\$\$\$	\$\$\$	\$\$\$	\$	\$	\$\$\$

\* The \$ / \$\$ / \$\$\$ references are used to indicate rate variation and are not associated with specific values.

We have been to a lot of amazing place  
but this island is very special and will  
remain on our memory for ever. ”

&BEYOND GUEST



DISCOVER ZANZIBAR  
& Beyond Mnemba Island

# Lodge amenities



1

## DIVE CENTER

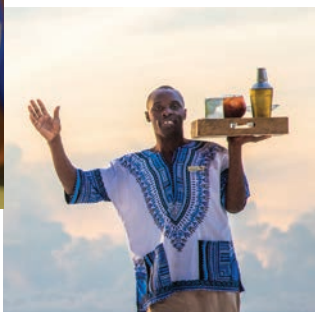
The island features two dive centers - one on the North of the Island and one on the south, used in accordance with the weather patterns, stocked with equipment for diving, snorkeling, kayaking and SUP. The island has a PADI dive school and qualified dive instructors.



2

## SIGNATURE BEACH SHOP

The island has an air-conditioned signature shop, which is a celebration of East African high end beachwear, jewellery and accessories. Also stocked are rash vests and beach necessities such as hats and sunscreen.



3

## PRIVATE BUTLER SERVICE

Your wish is our command with a personal butler on hand to ensure a seamless experience and bring nibbles and cocktails to your banda with discrete but impeccable personal service.



4

## IN ROOM WELLNESS AND YOGA

In season we have two internationally qualified wellness staff who are available for treatments with natural Healing Earth products and private yoga classes in the comfort of your beach banda.



5

## DINING LOCATIONS

Enjoy your meals in a variety of al fresco locations such as the beach, under the trees, in the thatched dining area or privacy of your room or beach sala.

## IMPACT INITIATIVES

We collaborate closely with the **Africa Foundation** on community development programmes: Over USD 420 000 invested since 2006 into education and healthcare in neighbouring communities.

**Community Leaders Education Fund:** 42 tertiary level students supported through bursaries.

**Conservation lessons:** Creating awareness through education where over 130 children and adults partake annually.

We are creating **conservation awareness** through education where over 203 children and adults partake annually

**79% of our team** are employed from local communities.

**79% of goods** are procured locally in Tanzania.

We purify our own still and sparkling water on site, at our **water purification plant**, using recycled **glass bottles**. Through this we have completely eliminated the use of plastic water bottles in the lodge.

In 2006 five **Aders' duiker** were introduced to &Beyond Mnemba Island. Since then, the population of this, the rarest antelope species in Africa, has increased to approximately 35.

**Recycling:** All plastic, glass, and materials such as old engine oil are sent away for re-use and recycling.

**Energy measurement & management:** Energy use is tracked and reported on a monthly basis. This includes the use of wood, petrol, diesel, electricity, gas, paraffin and charcoal.

We take steps to **conserve water**, including monitoring usage closely

DISCOVER ZANZIBAR  
&Beyond Mnemba Island

HOUSE REEF  
(INTREPID WATER SPORTS)



12

11

10

9

8

7

6

5



BEACH

FAMILY BANDA

WALKING TRAIL



GUEST ARRIVAL



DINING AREA



BAR



NORTH SIDE DIVE CENTRE



LIBRARY

ISLAND SHOP

4

3

2

1



WALKING TRAIL



SCENIC VIEWPOINT



BEACH



BOAT HOUSE/  
SOUTH SIDE DIVE CENTRE



GUEST ARRIVAL

Mnemba  
ISLAND



&BEYOND  
Mnemba Island

## DISCOVER ZANZIBAR

&Beyond Mnemba Island

# Lodge overview

## LODGE

Maximum number of guests	24
Number of rooms	12
Family accommodation	Link between two bandas which can be used as a family banda
Room types	Banda
Distance between rooms	10 – 15m / 33 – 50ft
Check in / Check out times	14h00 / 10h00
Island access	10 – 15 minute boat ride in an open ski boat. Boat transfers are weather dependent. Transfers are not available when it is dark – please speak to your travel specialist for more information.
Lodge closure	Seasonal closure in April and May; please contact us for exact dates

## DINING

Food / Dietary options	Kosher not available. Halaal and other special dietary requests available: <b>please book in advance</b>
Private butler service	Yes
Private dining	Yes
Plated service	Yes

## PAYMENT TYPES ACCEPTED

Credit cards accepted	Mastercard and Visa
Currency	USD are widely used, however, notes dated prior to 2006 are not accepted

## FACILITIES

Power	24 hour generator power
Internet access	Yes; Wi-Fi throughout
Wine store or cellar	No
Interactive kitchen	No
Swimming pool	Ocean front – no pool
Wellness offering	Healing Earth treatments offered in-room only
Fitness	Gym-in-a-Basket available in-room, private yoga lessons, water sports – stand up paddle boarding, kayak
Conference facilities	No
Weddings & blessings	These can be organised- please consult your travel specialist
Wheelchair access	Only if wheelchair is equipped with specialist wheels for use on beach sand
Complimentary laundry service	Yes
&Beyond Signature Beach Shop	Yes



## DISCOVER ZANZIBAR

& Beyond Mnemba Island

# Inclusions

### RATE INCLUDES

Accommodation	✓
Three meals daily	✓
Soft drinks, house wines, local brand spirit and beers, teas and coffees, and refreshments on lodge activities	✓
Water sports (scuba diving – 2 dives per day – full PADI certification required, snorkelling, kayaking, flyfishing, sundowner dhow cruise, and stand-up paddle boarding) subject to availability	✓
WILDchild programme	✓
Laundry	✓
Emergency evacuation insurance	✓
Return transfers between Zanzibar and Mnemba	✓

### RATE EXCLUDES

Administration fee	✗
Telephone calls	✗
Gratuities	✗
Personal items	✗
Island shop purchases	✗
Champagne, cognacs, fine wines, premium brand spirits, cigars	✗
Wellness and massage treatments	✗
Yoga classes	✗
Weddings and blessings	✗
Diving instruction for guests under the age of 12 years and adults without a PADI certificate	✗
PADI Dive courses	✗
Infrastructure tax of USD 1.00 pp/pn*	✗
Park fees and government charges may apply. Speak to your travel consultant for more details.	✗

\*per person per night

**NOTE: Unmanned Aerial Vehicles:** Please be advised that the use of unmanned aerial vehicles (Drones) are prohibited in the conservation areas we manage, until such time as their impact on oceanlife and wildlife can be assessed. This rule will apply throughout Africa, as our partners in various countries and regions have adopted a similar stance.



## DISCOVER ZANZIBAR

8Beyond Mnemba Island

# WILDchild

Families and groups will fall in love with the tranquility of the island. We will only accommodate a maximum of two children under 12 years old at 8Beyond Mnemba Island at any given time. Travel to Zanzibar is recommended for children eight years or older.

## WILDCHILD AT 8BEYOND MNEMBA ISLAND

Children visiting the lodge can take advantage of the fun-filled and interactive WILDchild programme that offers various activities such as:

- A delightful scavenger hunt
- Embarking on a pirate ship trip around the island
- Snorkelling
- Beach picnics
- Nature walks
- Baking turtle biscuits with the lodge chef

## FAMILY ACCOMODATION

Two bandas are situated within close proximity to one another and can accommodate a family of four (two adults and two children).

## CHILD MINDING

While we don't have trained child minders, we can offer the services of certain staff members who are wonderful with children. This will be at an additional cost.

**Please note:** The lodge is not fenced off and children are required to have an adult accompanying them at all times.

**The WILDchild activities, that were both land and water based, were such fun and kept my kids entertained from morning till night. Such fun!** ”

8BEYOND GUEST







&BEYOND MNEMBA ISLAND

# Naturally chic beach bandas

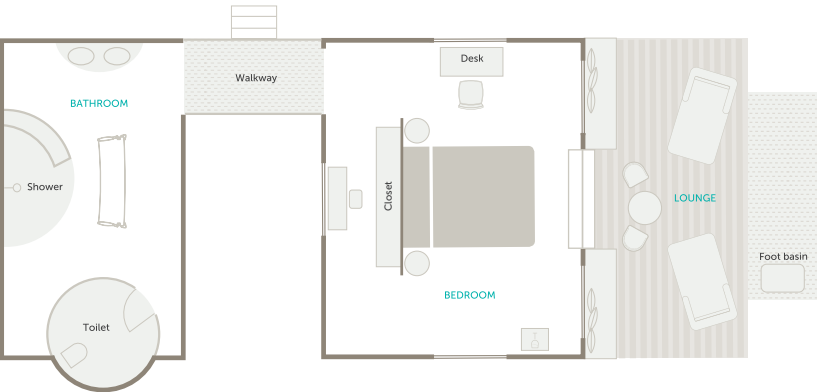
The island offers 12 rustic palm-frond bandas tucked into a tropical forest fringed by a white coral sand beach. Relax and unwind on your own stretch of beachfront.



DISCOVER ZANZIBAR  
&Beyond Mnemba Island accommodation

BANDA

12 beachside bandas / Maximum 24 guests

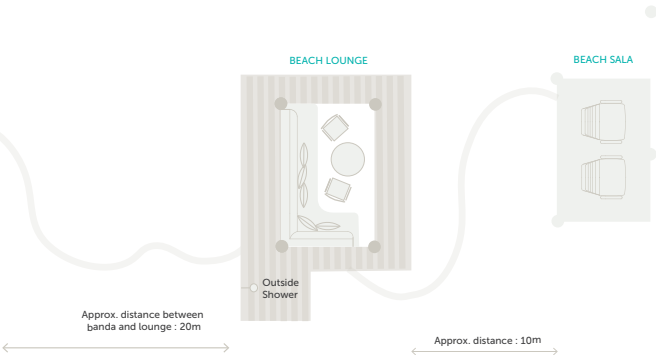


A SPECTACULAR GEM

Mnemba Island offers 12 rustic palm-frond bandas tucked into a tropical forest. A covered walkway leads to a shuttered ensuite bathroom with a glass-beaded shower curtain. Zanzibar is famous for its woodcarvings and the scrolled headboards adorning the beds are created by some of the Island's most skilled artisans.

ROOM FACILITIES

Room size	94 m <sup>2</sup>
Personal bar	Yes
Private verandah	Yes
Air conditioning / heating	No
Overhead fans	Yes
Mosquito nets	Yes
Bath	No
Shower	Yes
Seperate W.C.	Yes
Telephone	In-room telephones are available. Intermittent GSM mobile reception
Hairdryer	Yes
In-room safe	No
Plug type	220V AC (plug points in rooms), Plug type G British – BS 1363
Triple bed option	1 (children 16 years and younger)
Twin bed option	All convertible to double
Private beach sala	Yes



DISCOVER ZANZIBAR  
Beyond Mnemba Island accommodation

FAMILY BANDA

1 family unit (2 bandas linked with a walkway) / Maximum 2 adults & 2 children



AN ISLAND ESCAPE

A family banda comprises of a twin and double room that are situated close together with an adjoining wooden walkway. Each banda has its own ensuite bathroom and a private veranda and seating area. The family banda can accommodate two adults and two children (three children can be provided for on request).

ROOM FACILITIES

Room Size	94 m <sup>2</sup>
Personal bar	Yes
Private verandah	Yes
Air conditioning/heating	Yes
Overhead fans	Yes
Mosquito nets	Yes
Bath	No
Shower	Yes
Seperate W.C.	Yes
Telephone	In-room telephones are available. Intermittent GSM mobile reception
Hairdryer	Yes
In-room safe	No
Plug type	220V AC (plug points in rooms), Plug type G British – BS 1363
Triple bed option	1 (children 16 years and younger)
Twin bed option	All convertible to double
Interleaving walkway	Yes
Private beach salas	Yes

