



DE  HOOP

DE HOOP COLLECTION

ABOUT

The De Hoop Reserve is situated just three hours' drive from Cape Town on the world renowned Garden and Whale Routes. It is in the Overberg region near the southern tip of Africa and can be approached from either Bredasdorp or Swellendam. The Overberg area is characterised by quaint towns, a blossoming wine industry and delicious local dishes. The 36 000 hectares of De Hoop conservation area is a World Heritage Site comprising rich biodiversity and over 70 kilometres of pristine coastline. A 19 km vlei (wetland) stretches across the reserve, which is on the Ramsar list of Wetlands of International Importance. With our variety of activities and things to explore, we recommend a minimum 2 night stay.

LOCATION

The De Hoop Nature Reserve is situated east of Bredasdorp. The reserve is about 260 km by road from Cape Town, and may be reached via either Bredasdorp or Swellendam. The last 60 km of either route is along gravel roads and takes an hour to travel. Self-drive from Cape Town: Take N2 to Caledon. From Caledon drive through Napier to Bredasdorp. From Bredasdorp take the R319 to Swellendam. At about 6kms turn right - sign posted De Hoop / Malagas / Infanta. Gravel road for 33kms until you see a sign to the right - BUCHU BUSHCAMP / DE HOOP. It is 7km from this turn off to the Main Gate of the Park and a further 8km to the office. From Swellendam: Drive on N2 for 13km in the direction of Cape Town, turn left onto gravel road, signed Spitskop. Continue on this road for about 45km until you reach a T-junction. Turn left at the T-junction signed Malgas / Infanta and travel approx 2km before you turn right onto the De Hoop Pad signed BUCHU BUSHCAMP / DE HOOP. It is 7km from this turn off to the Main Gate of the Park and a further 8km to the office.

WHY DE HOOP

- Perfect holiday destination for families, couples, groups, honeymooners and wedding parties
- World-class land-based whale watching in Season
- Paradise for keen bird enthusiasts
- De Hoop Reserve has around 260 bird species
- CapeNature's Flagship Reserve



DE HOOP COLLECTION

WHALE SEASON

Every year, some 40% of the world's Southern Right Whales come to these shores to breed and De Hoop Nature Reserve is an important destination for these creatures. Females and their calves swim in the clear waters, while males put on spectacular displays. These endangered mammals ensure that the De Hoop Reserve in South Africa is one of the world's best land based whale-watching areas. As a marine reserve and World Heritage Site, De Hoop guarantees a safe nursery for these pods of visiting cetaceans. They come so close to the shore that visitors can relax on the unspoilt sand dunes, watching in awe as these beautiful creatures calve, blow, breach and belly-flop. Season runs from: End of May through to November. In season 500-600 whales will call De Hoop home. Sightings of 50-75 during height of season.

CLIMATE

The reserve has a Mediterranean climate and receives most of its rain during winter (May-Aug). Relatively warm off-shore waters result in mild winters and warm summers, with a mean annual temperature of 17,5°C. Rain falls throughout the year, with a peak in August and an average of 380 mm per year. Weak fogs also occur. The most frequent summer winds are east, west and south-east. In winter, westerly and south-westerly winds prevail and speeds may reach 60 km/h or more

GAME

- Mammals – over 86 species - most common: eland, bontebok, baboon, Cape mountain zebra, grey rhebuck, duiker, steenbok etc.
- Marine life: Southern Right Whales, dolphins and seals occur in the waters off the coast (3 nautical mile protected marine reserve)
- Birds – over 259 species - some of which include: Cape griffon vultures, ostriches, African oyster catcher and many more.



DE HOOP COLLECTION ACTIVITIES

GUIDED BIRD WALK

(duration +-2 hours) A wonderful walking experience with a qualified field guide focused on the identification and behaviour of the prolific birdlife found in De Hoop Nature Reserve. Length of walk dependent on fitness levels of participants. Depart from the meeting tree at the Opstal at 6am October - March and 8am April - September.

GUIDED MTB TRAIL

(duration 2 – 3 hours)
Get the chance to cycle among herds of eland, bontebok and other game species with a qualified field guide who will share his knowledge of less obvious natural and historical aspects of De Hoop. Depart from reception at various times. To be booked and confirmed at reception.

INTERPRETIVE MARINE WALK

(duration +-2 hours) A walking trail exploring coastal rock pools and sandy beaches while a qualified guide points out interesting marine life forms. Also a great way to experience the Southern Right Whales in the bay between June and December. Depart an hour before low tide from the meeting tree. Times of daily low tide should be confirmed with reception the day before.

VULTURE EXPERIENCE

(duration +- 3 hours)
Adventure out to the cliffs of Potberg Mountain to view endangered Cape Vultures – the Western Cape's last surviving colony of these amazing birds. Depart from the Opstal Area in the morning (times vary according to seasons) with your guide for a scenic drive through endangered fynbos. Once at Potberg, guests will hike (+1 hour) up to the Vulture Deck to watch the vultures swoop and soar above. Rate includes your packed picnic presented in a backpack for you to carry. Suited to Guests aged 12 and over. Minimum of 2 guests, maximum of 10. Prior arrangement & booking essential. Day visitors welcome.

GUIDED ECO BOAT CRUISE

(duration 1.5 -2 hour)
Explore the Vlei and enjoy bird, game, otter and even porcupine sightings with our eco cruise experience. Cruises are held daily at 11am and 3pm during summer or can be booked by arrangement. Morning cruises include tea, coffee as well as pastries and croissants with jam and cheese. Guests opting for the evening cruise can enjoy house wines, local beers, juices and savoury snacks. Please note that this excludes spirits and speciality wines.

NATURE DRIVE EXPERIENCE

(duration 2 hours) Experience the Pristine Fynbos and Wildlife on the reserve from an open safari vehicle. A qualified field guide will interpret rare and endangered species including Bontebok and Cape Mountain Zebra. The drive will encompass some of the beautiful scenic areas of the wetland and there will be opportunity for viewing and identifying some of the Birdlife occurring in the reserve. Rate includes sundowners with snacks, soft drinks, local beers & house wines. Maximum 8 guests.
Times: 17:00 Summer -16:00 Winter

MTB HIRE

Duration: 08h00 – 17h00
Cost: Please enquire at reception/reservations

Terms and Conditions

All activities are weather dependent. The Marine Walk is weather and tide dependent.

Activities can be pre-booked. Pre-booked activities will be confirmed or cancelled on arrival as per the discretion of management

No pre-payments are allowed. Payments are only accepted on arrival at the reserve

Rates are subject to change without prior notice. Rates include guided activity only and snacks & beverage only where indicated.

Children 11yrs and younger pay 50% of full rate

Eco Boat Cruise takes place on the De Hoop Vlei only – no cruises at coastline. Eco Boat Cruise takes maximum 10 guests including children

Nature Drive takes maximum 10 guests including children

A maximum of 10 Guests are allowed on the Vulture Experience and no children under 12yrs

RESTAURANT

The Fig Tree Restaurant is open daily, from 08h00-21h00, and serves breakfast, lunch, dinner, snacks, teas, coffees and cakes and is licensed. Ask about our local wine selection, craft beers and ciders.

Situated in the main Opstal area, De Hoop Collection's Fig Tree Restaurant offers day and overnight visitors a welcoming and comfortable setting in which to enjoy local culinary creations. The building that used to be a shed that was used by the farmer and later by the maintenance team of De Hoop Collection, has been renovated to a beautiful space with stunning views of the De Hoop Vlei.

The silo behind 'The Shed' was cleverly transformed into 'William's Wine Cellar', a round shaped space that is home to more than 3000 wines where you are invited to select a cultivar of your choice.



Did you know:

Our team can set up a **Boma Meal** beneath the stars for group bookings and special occasions. (prebooking required)



RESTAURANT



From canapes to pizzas and mouth-watering salads, our De Hoop Restaurant and Hospitality team can cook up a storm.



WEDDINGS

De Hoop Collection is a wonderful place to have a memorable and relaxed weekend wedding celebration with your family and friends. We can accommodate around 120 guests at De Hoop Collection in various types of accommodation with a range of affordability and luxury.

Our reservations office will gladly arrange the accommodation for your guests, including or excluding meals, and our team of preferred suppliers will work with you to ensure that planning your dream day is a dream experience!

Contact our wedding team on info@dehoopcollection.co.za to find out more.



Images: Kobus Tollig + De Hoop Collection



OPSTAL SUITES



The Cloete Suites are situated in the Opstal area within close proximity to the Fig Tree Restaurant. Two of the suites (1 & 2) have a view of the grasslands where bontebok, eland and mountain zebra amongst others can be seen grazing, while Cloete Suites 3 & 4 have a spectacular view of the old majestic fig trees in the courtyard.

Each suite is beautifully decorated and has a seating area and an en-suite bathroom with bath and shower. Cloete Suite 1 has a lovely fireplace for those chilly winter nights.

The Opstal area is a central base from which to explore the reserve and is close to the hub of central offices, restaurant, bar and curio shop. The Fig Tree Restaurant is open daily. There is a tennis court, swimming pool and a boules courtyard. It is a short drive, hike or cycle to many of the interesting locations in the reserve.



Room Facilities:

Each suite Sleeps 2 people

Facilities: Kettle; Coffee; Tea; Bar
Fridge

Bedroom: 1 King size bed with
mosquito net.

En-Suite Bathroom: Shower; Bath;
Basin; Toilet

Linen, towels and amenities are
provided

Serviced daily

Meals are served in The Fig Tree
Restaurant

OPSTAL SUITES



The Opstal Cloete Cottage is a brand new suite situated between the Fig Tree and Cloete Suites. It is a lovely private suite decorated in luxury and is only a short walk from the Fig Tree Restaurant. This suite sleeps 2 people and has one bedroom with en-suite bathroom (shower & bath). The accommodation is catered for as it has no cooking facilities. Dinner and breakfast is included and served in The Fig Tree Restaurant.

The Opstal area is a central base from which to explore the reserve and is close to the hub of central offices, restaurant, bar and curio shop. The Fig Tree Restaurant is open daily. There is a tennis court, swimming pool and a boules courtyard. It is a short drive, hike or cycle to many of the interesting locations in the reserve.



Room Facilities:

Sleeps 2 people
 Facilities: Kettle; Coffee; Tea; Bar
 Fridge
 Bedroom: 1 King size bed with mosquito net
 En-Suite Bathroom: Shower; Bath; Basin; Toilet
 Linen, towels and amenities are provided
 Serviced daily
 Meals are served in The Fig Tree Restaurant

OPSTAL SUITES



The New Dassie Suite has a fabulous view of the vlei. This Suite is perfectly positioned to view the birdlife and majestic sunsets from your veranda. Wake up to the sound of the birds from the Vlei and the chance of Otter sightings from your room.

The Dassie suite is luxury accommodation which sleeps 2 people with en suite bathroom. The Dassie Suite includes a sitting area and cosy fireplace for winter. Meals are included on a dinner, bed and breakfast basis.

Set amongst a dazzling array of wildlife and fynbos, this suite is perfect for discerning guests.

The Opstal area is a central base from which to explore the reserve.



Room Facilities:

Sleeps 2 people
 Facilities: Kettle; coffee; tea; bar fridge
 Bedroom: 1 king size bed with mosquito net.
 Fireplace
 En-suite bathroom: Shower; bath; basin; toilet
 Linen, towels and amenities are provided
 Seating area outside overlooking the vlei
 Serviced daily
 Meals are served in The Fig Tree Restaurant

OPSTAL SUITES



The newly built Figtree Suite is set in the courtyard with its magnificent Wild Fig Trees. It is an upmarket suite with en-suite bathroom and sleeps 2 guests on a dinner, bed and breakfast basis.

The Figtree Suite is connected to the larger Opstal area including the Fig Tree Restaurant.

The Opstal area is a central base from which to explore the reserve and is close to the hub of central offices, restaurant, bar and curio shop. There is a tennis court, swimming pool and a boules courtyard. It is a short drive, hike or cycle to many of the interesting locations in the reserve.



Room Facilities:

Sleeps 2 people

Facilities: Kettle; Coffee; Tea; Bar Fridge

Bedroom: 1 King size bed with mosquito net

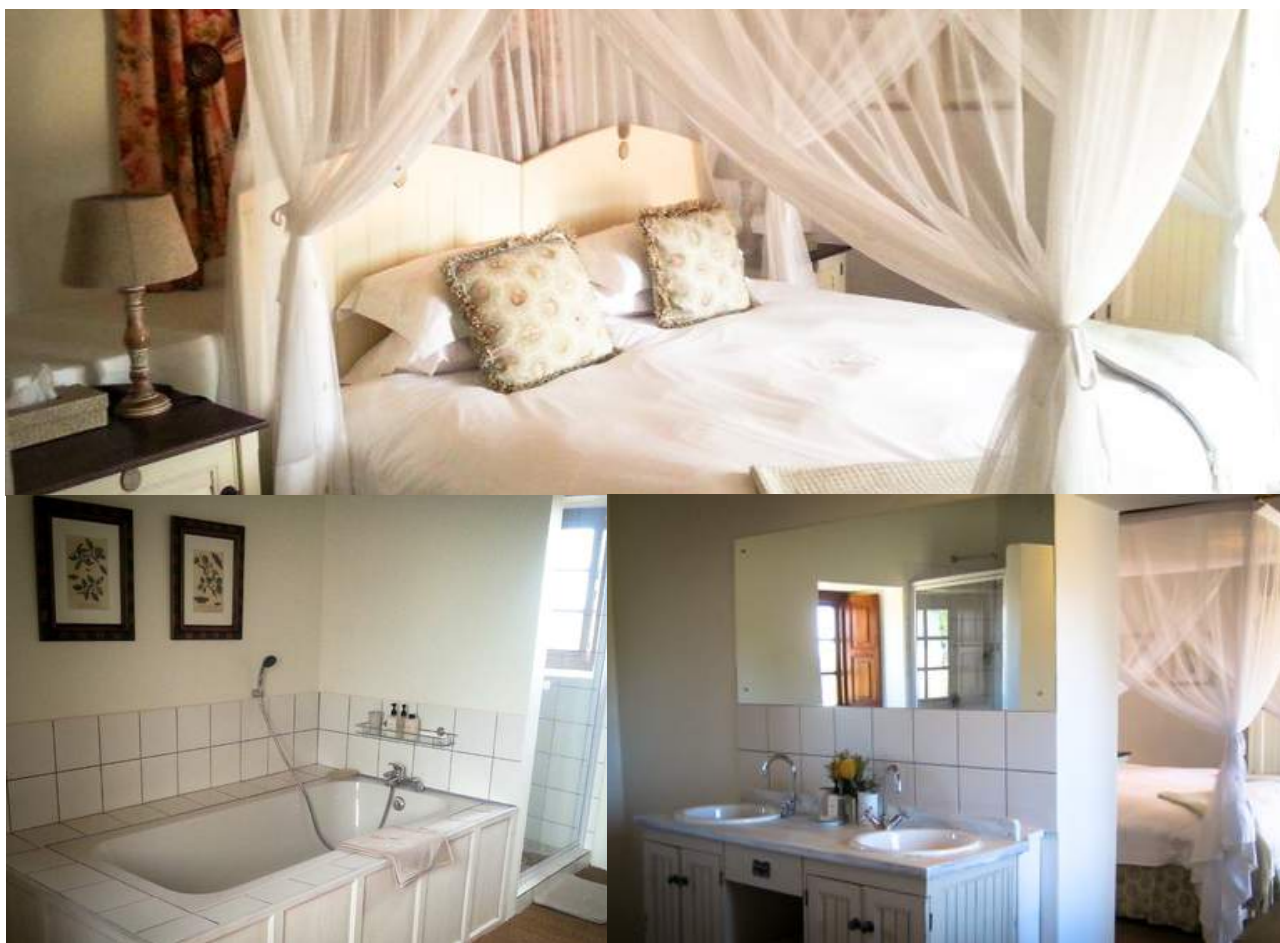
En-Suite Bathroom: Shower; Bath; Basin; Toilet

Linen, towels and amenities are provided

Serviced daily

Meals are served in The Fig Tree Restaurant

OPSTAL SUITES



The Opstal Stable Suite sleeps 2 people with one bedroom and en suite bathroom, on a dinner, bed and breakfast rate.

The Opstal Stable Suite is connected to the larger Opstal area including the Fig Tree Restaurant.

Set in the courtyard with its magnificent Fig Trees, this suite is perfect for discerning guests.

The Opstal area is a central base from which to explore the reserve and is close to the hub of central offices, restaurant, bar and curio shop. There is a tennis court, swimming pool and a boules courtyard. It is a short drive, hike or cycle to many of the interesting locations in the reserve.



Room Facilities:

Sleeps 2 people

Facilities: Kettle; coffee; tea; bar fridge

Bedroom : 1 king size bed with mosquito net

En-suite bathroom: Shower; bath; basin; toilet

Linen, towels and amenities are provided

Serviced daily

Meals are served in The Fig Tree Restaurant

OPSTAL SUITES



The Opstal Vlei Suite has a fantastic view of the vlei.

This vlei-facing luxury bedroom sleeps 2 people in one bedroom with an en suite bathroom, on a dinner, bed and breakfast basis.

The Opstal suites are connected to the larger Opstal area including the Fig Tree Restaurant.

The Opstal area is a central base from which to explore the reserve and is close to the hub of central offices, restaurant, bar and curio shop. There is a tennis court, swimming pool and a boules courtyard. It is a short drive, hike or cycle to many of the interesting locations in the reserve.



Room Facilities:

Sleeps 2 people
 Facilities: Kettle; coffee; tea; bar fridge
 Bedroom : 1 king size bed with mosquito net
 En-suite bathroom: Shower; bath; basin; toilet
 Linen, towels and amenities are provided
 Serviced daily
 Seating area outside overlooking the vlei
 Meals are served in The Fig Tree Restaurant

OPSTAL SUITES



The 3 newly renovated Otter Suites are positioned close to the serene De Hoop Vlei. Wake up to the sound of the birds and the chance of Otter sightings near your room.

The Otter suites consist of well-appointed accommodation which sleep 2 people with en suite bathroom. Meals are included on a dinner, bed and breakfast basis.

Set amongst a dazzling array of wildlife and fynbos, this suite is perfect for discerning guests.

The Opstal area is a central base from which to explore the reserve and is close to the hub of central offices, restaurant, bar and curio shop. There is a tennis court, swimming pool and a boules courtyard. It is a short drive, hike or cycle to many of the interesting locations in the reserve.



Room Facilities:

Sleeps 2 people

Facilities: Kettle; coffee; tea; bar fridge

Bedroom : 1 king size bed with mosquito net

En-suite bathroom: bath; basin; toilet

Linen, towels and amenities are provided

Serviced daily

Seating area outside overlooking the vlei

Meals are served in The Fig Tree Restaurant

OPSTAL MANOR HOUSE



The Opstal Manor House is a beautiful original home which has been restored to its former glory. Rooms can be rented out individually, or all 3 rooms within the Manor House can be booked for Exclusive Use.

The house has two large suites that are spacious and have en-suite bathrooms with bath and shower. The small room is suitable for children up to the age of 11 and has an en-suite bathroom with shower only. A cosy lounge with fireplace and the old stone floor kitchen is shared between all guests.

The kitchen is not equipped for self-catering but tea and coffee facilities are available here. Dinner and Breakfast is included and served in The Fig Tree Restaurant.

The Opstal area is a central base from which to explore the reserve and is close to the hub of central offices, restaurant, bar and curio shop. There is



Room Facilities:

Large Suites – 1 X King 4-poster bed, 1 X Twin Beds
Bath, shower
Small Room – 1 x Twin Beds
Shower
Linen, towels and amenities are provided
Serviced daily

MELKKAMER



About Melkkamer

The sandstone buildings on the opposite side of the vlei (wetland) are known as 'Melkkamer'. This remote and exclusive homestead is a 40 min drive from the Opstal area and boasts 3 units dating from the late 1800's. There is no electricity and all the units have gas powered appliances, with candlelight and lanterns adding to the romance and charm of this unique area. A generator is available for the Melkkamer Manor House and Melkkamer Foremans Cottage and is switched on at pre-determined times for the convenience of our guests.

All three cottages are fully equipped for self-catering or guests can drive around for dinner to The Fig Tree Restaurant at the Opstal. Please note that booking a table for dinner is essential. For those who prefer to self-cater, kindly ensure that you have adequate supplies, as the nearest towns are an hour's drive away.

Come and escape to a bygone era in the peace and tranquillity that is the Melkkamer Homestead.

MELKKAMER MANOR HOUSE



This beautiful remote, old stone Manor House comprises four magnificently appointed bedrooms with en suite bathrooms.

The house is fully equipped for self-catering and has a beautiful spacious kitchen, a cosy lounge and charming dining room. There are fireplaces inside and a lovely outside braai area under the milkwood trees.

Melkkamer Manor House is the perfect destination for discerning guests who seek the privacy of sole-use villa accommodation.

This unit is sold on a self-catering basis only. No facilities are available at Melkkamer and the Opstal area is a 40min drive away. Boat trips are weather dependent.



Room Facilities:

4 Bedrooms (2 X King 4-poster bed, 2 X Twin beds)
 Hangers & Linen provided
 4 Bathrooms: Showers, baths, basins, toilets, bath mats, bathroom towels, soap, hand wash, shampoo & conditioner; body wash & body lotion provided.
 Kitchen: no electricity, generator, gas fridge/freezer, gas stove/oven, basic crockery and cutlery, basic kitchen utensils, sink (dishwashing liquid and sponge provided), braai equipment
 Lounge, Dining Room, 2 separate toilets, fireplaces.
 Serviced daily

MELKKAMER VLEI COTTAGE



The lovely old stone cottage overlooks the stunning De Hoop vlei. It has four beautifully appointed bedrooms with 2 separate bathrooms. There is a separate sitting room, dining area with fully equipped kitchen and a cosy fireplace.

Paraffin lamplight and firelight add to the romance of the location, where there is no electricity.

Melkkamer Vlei Cottage is set on a unique wetland location and ideal for families or small groups, especially keen birders.

This unit is sold on a self-catering basis only. No facilities are available at Melkkamer and the Opstal area is a 40min drive away. Boat trips are weather dependent.



Room Facilities:

4 Bedrooms (1 X King 4-poster bed, 1 X King bed, 2 X Twin beds)

Linen and hangers provided

2 Bathrooms: 2 Showers; basins; toilet; bath mats. Bathroom towels; soap; hand wash; shampoo & conditioner; body wash & body lotion provided.

Kitchen lounge/dining area fireplace; outdoor braai and dining area

Kitchen: No electricity. Gas fridge/freezer; gas stove/oven; basic crockery and cutlery; basic kitchen utensils; sink (dishwashing liquid & sponge provided) braai equipment
Serviced daily

MELKKAMER FOREMANS COTTAGE



The Melkkamer Foremans Cottage is charming and tucked away amongst the milkwood trees. It is a short walk from the vlei and the Melkkamer Manor House. It has three bedrooms, open plan sitting room with dining room and fully equipped kitchen and barbecue area.

The Melkkamer Foremans Cottage is ideal for family getaways or for a small group of friends.

This unit is sold on a self-catering basis only. No facilities are available at Melkkamer and the Opstal area is a 40min drive away. Boat trips are weather dependent.



Room Facilities:

3 Bedrooms (1 X King 4-poster bed, 2 X Twin beds)

Linen and hangers provided

1 Bathroom: Outside shower; bath; basin; toilet; bath mat. Bathroom towels; soap; hand wash; shampoo & conditioner; body wash & body lotion provided

Kitchen lounge/dining area; fireplace; outdoor braai and dining area

No electricity: Gas fridge/freezer; gas stove/oven; basic crockery and cutlery; basic kitchen utensils; sink (dishwashing liquid & sponge provided) braai equipment (provided) Serviced daily

SELF-CATERING ACCOMMODATION



These beautiful thatched 2 bedroomed cottages have a living area with well-equipped kitchen and cosy fireplace, bathroom serviced with linen and towels. The cottages are private and have partial views of the Vlei.

Catered and self catered options available.

There is a tennis court, swimming pool and a boules courtyard in the Opstal area.



Room Facilities:

3 cottages: Kitchen; lounge/dining area; outdoor braai.

Fireplace

Facilities: Kettle; toaster; microwave; fridge/freezer; stove/oven; basic crockery and cutlery; basic kitchen utensils; sink (dishwashing liquid & sponge provided); braai equipment ;permanent braai grid provided.

Bedroom Setup: 1 X King 4-poster bed, 1 X Twin beds

Linen and hangers provided.

Bathroom: Shower; basin; toilet; bath mat. Bathroom towels; soap; hand wash; shampoo & conditioner; body wash & body lotion provided

Serviced daily

SELF-CATERING ACCOMMODATION



These 3-bedroomed houses are set in amongst the Milkwood trees near the opstal area. They have spacious bedrooms, separate sitting room and dining room with a fully equipped kitchen. Bathrooms are equipped with both showers and a bath, with a separate toilet. These houses are well appointed and perfect for families or groups of friends. Catered and self catered options available.

There is a tennis court, swimming pool and a boules courtyard in the Opstal area.

Room Facilities:

4 houses: Kitchen; lounge/dining area; fireplace; outdoor braai.

Facilities: Kettle; toaster; microwave; fridge/freezer; stove/oven; basic crockery and cutlery; basic kitchen utensils; sink (dishwashing liquid & sponge provided); braai equipment and permanent braai grid provided. Bedroom setup: 1 double (double or twin beds) and 2 twin bedrooms. Linen and hangers provided.

Bathroom: Shower and bath ; basin; separate toilet; bath mats. Bathroom towels; soap; hand wash; shampoo & conditioner; body wash & body lotion provided

Serviced daily

SELF-CATERING ACCOMMODATION



There is one 3-bedroomed cottage called Eland, and six 2-bedroomed cottages; Mountain Zebra, Bontebok, Baboon, Steenbok, Duiker and Grysbok.

These cottages have fully equipped kitchens, comfortable bedrooms and bathrooms supplied with fresh linen and towels. These well-appointed cottages are a stylish and affordable option in the hub of the reserve.

Catered and self catered options available.

Room Facilities:

7 cottages in total: 6 of them offer 2 bedrooms and 1 bathroom; 1 with 3 bedrooms and 1 bathroom (Eland).
 Kitchen; Sitting area; dining area; outdoor braai and dining area
 Kitchen amenities: Kettle; toaster; microwave; fridge/freezer; stove/oven; basic crockery and cutlery; basic kitchen utensils; sink (+ dishwashing liquid & sponges provided); braai equipment
 Bedroom setup: 1 Double and 1 twin, 1 Double and 2 twins (Eland)
 Linen and hangers provided
 Bathroom – Shower; basin; toilet; bath mat. Bathroom towels; soap; hand wash; shampoo & conditioner; body wash & body lotion provided
 Serviced daily

SELF-CATERING ACCOMMODATION



The cottages are whitewash-walled fisherman-style houses characteristic of the Western Cape Coast. Ideal for a family and friends getaway, the cottages are well appointed and provide guests with a home-from-home setting. Catered and self catered options available.

The De Hoop Village forms part of the Opstal area, which offers the largest amount of accommodation in the De Hoop Collection and is close to the restaurant, curio shop and reception. It is a short drive, hike or cycle to many of the interesting locations in the reserve. There is a tennis court, swimming pool and boules courtyard .



Room Facilities:

9 cottages: Kitchen lounge/dining area; outdoor braai and dining area
 Amenities: Kettle; toaster; microwave; fridge/freezer; stove/oven; basic crockery and cutlery; basic kitchen utensils; sink (dishwashing liquid & sponge provided); braai equipment
 3 Bedrooms: 1 double room (either twin or double bed); 1 twin room & 1 bunk room
 Linen and hangers provided
 1 Bathroom: Shower; basin; toilet; bath mat; bathroom towels; soap; hand wash; shampoo & conditioner; body wash & body lotion provided
 Serviced daily

SELF-CATERING ACCOMMODATION



These 5 Campsite Rondawels are thatched cottages with 2 beds with outdoor shared showers and toilets. Perfect for guests looking for simple and affordable accommodation with a braai area, but no other kitchen facility.

The Opstal area is the hub of the reserve and a great location from which to explore the whole area. These chalets are a great base among the diverse fauna and flora



Room Facilities:

5 Campsite Rondawels/chalets: Twin beds (can be double if requested). Equipped with 2 beds; bedside table; basin; cupboard; kettle; bar fridge; some basic cutlery, crockery and glasses; toaster; braai and outdoor dining area
No cooking facilities.
Communal toilets and outside showers
Serviced daily

BEFORE YOU LEAVE

Comfortable walking shoes
sun hat
sun glasses
binoculars
camera and memory cards
light neutral coloured clothing
bathing suit
warm jackets are essential (May – October)
a small torch.

The nearest fuel station is 15km from the reserve at Ouplaas and operates from Monday to Friday. Alternatively, the closest towns are an hour's drive away and are Bredasdorp and Swellendam.

The Curio Shop is the same venue as the reception and sells the following items: Cooldrinks • Snacks (Chips, Chocolates, Biscuits, Biltong, etc) • Braai meat & wors • Ice • Wood & Firelighters • Exciting books about the environment, birds, mammals, children's books etc • A Beautiful range of bags • Special gifts • T-shirts, caps & hats • Limited food supplies The curio shop mainly sells gifts and food supplies are limited. The above list is only an indication of what you can expect and you are sure to find many gems that make perfect gifts for your loved ones.

The Fig Tree Restaurant at the Opstal camp is open for breakfast, lunch and dinner and picnic hampers for guests can also be pre-ordered.

ARRIVING

Conservation fee is payable at the gate on arrival.
Please ask about the current price when booking.
Wildcard holders get free entry and children under 12 are charged half price.
Gates open at 7:00 and close at 18:00 on Mon, Tue, Wed, Thu, Sat, Sun
Gates open at 7:00 and close at 19:00 on Saturdays
Check in time is at 14:00 and check out at 10:00

Reception and general information can be found at the Opstal Camp. All activities can be booked at Reception and generally depart from the meeting tree. Please confirm departure point at reception when booking your activity.





HEALTH & SAFETY ADVISORY

PREVENTION MEASURES TO MAKE SURE OUR GUESTS & STAFF ARE SAFE.

De Hoop Collection has implemented the following protocols to ensure a healthy and safe environment.

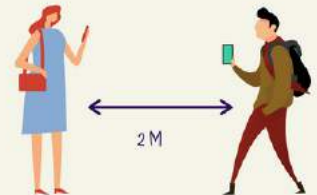
TEMPERATURE SCREENING & HEALTH CHECKS

Temperature Screening on guests will take place at the Cape Nature gate on arrival and a health questionnaire will be required on check-in. Daily health checks will be undertaken on all staff.



KEEPING SOCIAL DISTANCING

We encourage guests to keep appropriate social distancing from other guests and our staff are trained on social distancing measures.



HAND SANITIZER

Hand sanitizer will be handed out on check-in and will be available in all public spaces.



MASKS

Face masks are required in all communal and public spaces.



EXPERIENCES

All adventures & activities will implement safe and appropriately distanced interactions with relevant guides and staff.



GUIDED ACTIVITIES

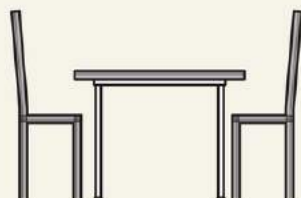
We limit the maximum number of people on games drive to 6 per vehicle (unless quests are part of a large family group travelling together)



RESTAURANTS & DINING

Dining set-up for all meals has been carefully considered.

Tables in dining areas are spaced at least 2 meters apart.



FOOD OPTIONS

All meals will be individually plated and served.

No open-food buffets will be served.



MEDICAL EMERGENCY

De Hoop emergency number 071 260 7805

Please contact us should you have any questions or concerns

info@dehoopcollection.co.za

+27 21 422 4522

www.dehoopcollection.com

CHAT TO US

Reservations, Sales & Marketing:
Email: res@dehoopcollection.co.za
Telephone: 021 422 4522
Contact: Samantha Jooste

Public Relations:
Email: theresa@theresagibbonpr.co.za
Telephone: 082 820 8437
Contact: Theresa Gibbons

Marketing:
Email:
marketing@dehoopcollection.co.za
Telephone: 021 422 4522
Contact: Eloise Williams

Connect with us Online:
www.dehoopcollection.co.za
www.facebook.com/dehoopcollection
twitter.com/DeHoopReserve
[instagram @dehoopreserve](https://www.instagram.com/dehoopreserve)



Member of Cape Country Routes

Reserve Management:
Hendrik Arendse
hendrik@dehoopcollection.co.za

Dalfrenzo Laing
dalfrenzo@dehoopcollection.co.za

028 542 1253
071 260 7805